

Valid January 15 - March 20  
**OFFICIAL PASSPORT**

**KLAMATH  
ACTIVITIES  
CHALLENGE**  
WINTER 2024

# CHALLENGE RULES

The 2024 Klamath Activities Challenge kicks off on **January 15**. Participants will have 9 weeks to complete as many activities possible listed in this passport. All passports must be completed and returned to the **Sky Lakes Wellness Center by Wednesday, March 20** to redeem a prize. Grand Prize winner will be selected in a live Facebook drawing on March 21.

## PASSPORT

Pick up a copy of your 2024 Klamath Activities Challenge Official Passport at the Sky Lakes Wellness Center.

## PRIZES

**Everyone** who returns a passport with at least 1 activity completed will receive:

- 2024 Klamath Activities Challenge Sticker
- One entry for the GRAND PRIZE drawing

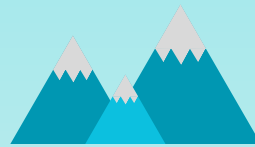
**Return a passport with 5-7 activities complete, receive:**

- Two entries for the GRAND PRIZE drawing

**Return a passport with 8 or more activities complete, receive:**

- Three entries for the GRAND PRIZE drawing

The **FIRST 10 people** to return a passport with **8 or more activities** will receive a **Hydroflask**.



The contact info below must be complete for valid prize entry.

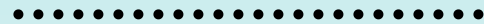
Name: \_\_\_\_\_

Phone Number: \_\_\_\_\_

\*Email: \_\_\_\_\_

\*Email will be used to notify participants about future challenge details.

How did you hear about the challenge?



128 South 11th St. PH: 541-274-2770 Fax: 541-274-2775  
skylakeswellnesscenter@skylakes.org



.....  
The **FUN IN THE SNOW** challenge will have its own drawing. See inside for details!  
.....

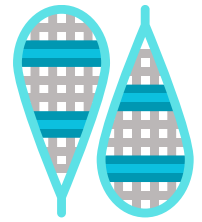


(Enter date completed in blank)

# HIKE OR SNOWSHOE



- Klamath Geo Trail \_\_\_\_\_
- Link River Trail \_\_\_\_\_
- Klamath Wingwatcher's Interpretive Trail \_\_\_\_\_
- Moore Park Trails \_\_\_\_\_
- Choose your own adventure  
Trail: \_\_\_\_\_  
Trail: \_\_\_\_\_



# BILL COLLIER ICE ARENA

Located just outside of town at the Running Y Resort, Bill Collier Ice Arena offers unique ways to get outdoors during winter months. [www.klamathicesports.org/home](http://www.klamathicesports.org/home)

- Ice skating \_\_\_\_\_



# SWIM AT ELLA REDKEY

Klamath's only geothermally heated pool is open year round for classes, lap swim and open swim. [www.klamathfalls.city/181/Ella-Redkey-Pool](http://www.klamathfalls.city/181/Ella-Redkey-Pool)

Swimming \_\_\_\_\_



# STEEN SPORTS PARK

Premier athletic facility in Southern Oregon on 150 acres, dedicated to promoting physical health and fitness.

- Walking \_\_\_\_\_  
[www.steensportspark.com](http://www.steensportspark.com)
- Pickleball \_\_\_\_\_  
[www.kbpickleball.com](http://www.kbpickleball.com)



# FUN IN THE SNOW

This challenge is **EXTRA SPECIAL!!** Weather permitting, we want to see your fun in the snow! Build a snowman, make a snow angel family, construct a snow fort..... the possibilities are **ENDLESS!!**

This special challenge will have it's own prize! Be sure to post a picture on our Facebook [@skylakeswellnesscenter](https://www.facebook.com/skylakeswellnesscenter) to be entered into the **FUN IN THE SNOW** drawing!!!!

